

SWAGELESS COMPRESSION TERMINAL

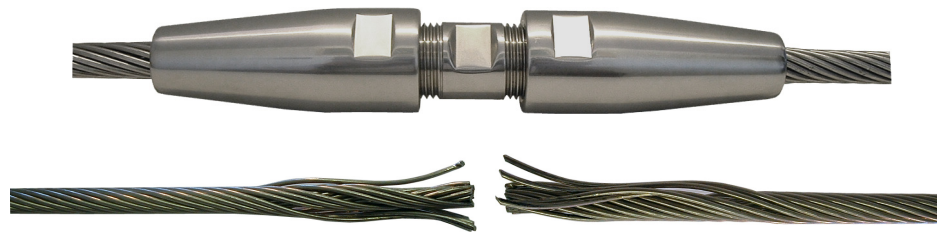
In-Line Links

Benefits

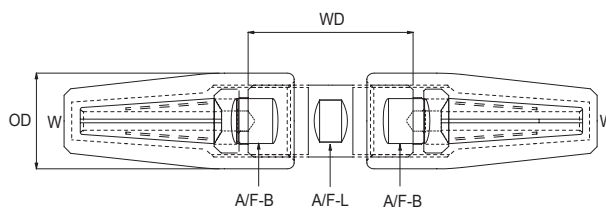
The latest development for compression fittings results in a termination at least as strong as the rated breaking load of the wire rope. The unique star shaped Crown Ring positions and holds the wire strands in place, eliminating the requirement for awkward wire end bending. The shallow angled cone establishes direct mechanical grip on the core and all outer strands. Stainless Steel grade EN10088 1.4404 (316) is used on all parts with the exception of the crown ring which is manufactured from Aluminium Bronze. No sealant or packing is required.

What is a Compression Terminal In-Line Link and How Does It Work?

The Compression In-Line Link allows you to repair broken wires very easily and quickly. They are ideal for emergency situations where a wire must be repaired immediately. The product is as strong as the associated wire. The product incorporates two swageless bodies joined by a special in-line coupler which enables the broken wire pieces to be re-joined. The body and crown ring parts are totally re-usable which keeps the cost of maintaining a repair kit down.



This system allows broken wires to be instantly repaired using the special in-line link with two compression terminals.



The In-Line Link benefits from the unique crown ring which is used in all compression terminals. See the compression terminal pages for more information.

Compression In-Line Link						
Product Code	Wire	WD	A/F-L	A/F-B	OD	Weight
CTL03	3mm	26mm	6mm	9.5mm	11mm	10g
CTL04	4mm	27mm	8mm	11mm	13mm	14g
CTL05	5mm	33mm	9mm	14mm	16mm	24g
CTL06	6mm	35mm	11mm	17mm	19mm	43g
CTL07	7mm	43mm	13mm	20mm	22mm	63g
CTL08	8mm	55mm	16mm	22mm	26mm	115g
CTL10	10mm	62mm	17mm	26mm	30mm	180g
CTL12	12mm	72mm	22mm	32mm	38mm	350g
CTL14	14mm	85mm	24mm	36mm	45mm	518g
CTL16	16mm	97mm	28mm	40mm	47mm	671g
CTL19	19mm	97mm	32mm	44mm	51mm	811g
CTL22	22mm	111mm	34mm	52mm	58mm	1268g
CTL26	26mm	131mm	44mm	64mm	77mm	2519g

Wire Construction

The part codes in the table are for 1 x 19 wire rope construction. Different Cones and Crown Rings are used for 7 strand, compact strand and Dyform®. Add suffix -7 for 7 Strand wires. Please refer to your re-seller for the relevant coding for Compact Strand or Dyform®.