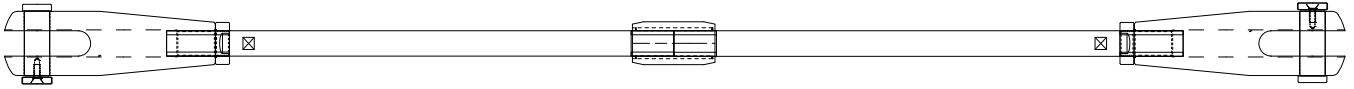
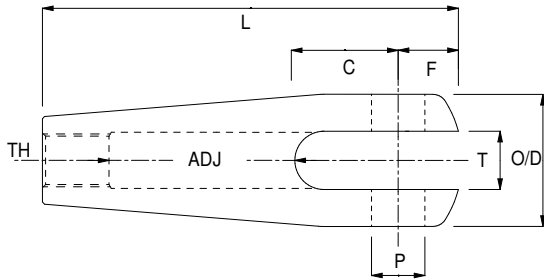


Architectural Bar Systems

Architectural Tie-Bars - Imperial Threads



All IMPERIAL tie-bars are manufactured from stainless steel EN10088 1.4404/1. Solid bars are manufactured to customer lengths up to a maximum of 3 metres. Bar systems with lengths in excess of 3 metres are made up of several bars and bar couplers.



A standard tie-bar assembly consists of:

- the bar (and any couplers)
- and -
- two architectural adjuster forks - one right hand and one left
- two double headed clevis pins
- two architectural lock nuts - one right hand and one left

Suffix with R for RH or L for LH

PRODUCT CODE	THREAD UNF	PIN P	T	C	F	ADJ	O/D	L
AAF1/4	1/4"	6.4mm	7mm	15mm	8mm	24mm	16mm	55mm
AAF5/16	5/16"	8mm	8.5mm	16mm	10mm	32mm	19mm	70mm
AAF3/8	3/8"	9.5mm	10mm	20mm	12mm	40mm	22.2mm	88mm
AAF7/16	7/16"	11mm	11mm	23mm	15mm	44mm	28.6mm	98mm
AAF1/2	1/2"	13mm	13mm	30mm	18mm	48mm	32mm	120mm
AAF5/8	5/8"	16mm	16mm	32mm	20mm	64mm	38mm	142mm
AAF3/4	3/4"	19mm	19mm	40mm	24mm	72mm	51mm	160mm
AAF7/8	7/8"	22.2mm	22mm	45mm	26mm	80mm	57mm	179mm
AAF1	1"	25mm	25mm	52mm	32mm	90mm	63.5mm	207mm
AAF11/8	1 1/8"	28.4mm	28.4mm	60mm	35mm	100mm	70mm	231mm
AAF11/4	1 1/4"	32mm	32mm	64mm	38mm	110mm	79.3mm	252mm
AAF13/8	1 3/8"	35mm	36mm	70mm	44mm	120mm	89mm	278mm

Architectural Bar Couplers - Imperial Threads

PRODUCT CODE	THREAD UNF	OD	L
ABC1/4	1/4"	10mm	25mm
ABC5/16	5/16"	12mm	30mm
ABC3/8	3/8"	16mm	35mm
ABC7/16	7/16"	16mm	40mm
ABC1/2	1/2"	19mm	45mm
ABC5/8	5/8"	22mm	55mm
ABC3/4	3/4"	28mm	65mm
ABC7/8	7/8"	32mm	75mm
ABC1	1"	35mm	85mm
ABC11/8	1 1/8"	41mm	95mm
ABC11/4	1 1/4"	44mm	105mm
ABC13/8	1 3/8"	50mm	120mm

