

# TURNBUCKLES

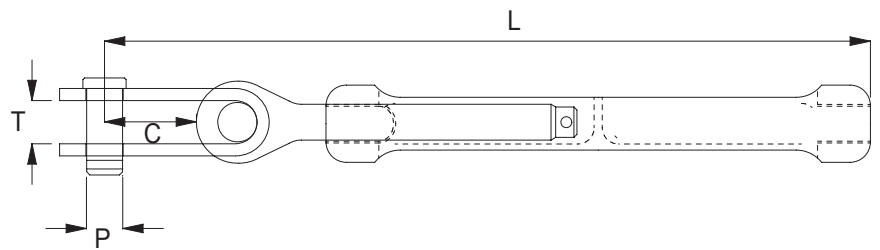
## Gracilis Body with Toggle and Blank

### Benefits

Generously proportioned toggle straps are designed to take the full wire breaking load on each side of the eye and pin, avoiding premature failure due to transient unbalanced loads.

Incorporating the new Gracilis body - a unique design offering strength and integrity.

Traditionally, turnbuckle bodies are manufactured by forging a soft bronze to produce the desired shape.



This part can be used with any of our threaded parts, such as an eye, toggle, stud or even shackle toggle. Please refer to the threaded parts specification sheet for further details.

Turnbuckle with toggle and blank							
Product Code	Wire	Thread	P	C	T	Min L	Max L
GTTB03	3mm	1/4" unf	6.3mm	16mm	7.7mm	137.5mm	173.5mm
GTTB04	4mm	5/16" unf	8mm	16.5mm	9mm	164.0mm	204.0mm
GTTB05	5mm	3/8" unf	9.5mm	20.4mm	10.3mm	199.5mm	251.5mm
GTTB05US	5mm	7/16" unf	11.1mm	28mm	13mm	225.5mm	281.5mm
GTTB06	6mm	7/16" unf	11.1mm	28mm	13mm	225.5mm	281.5mm
GTTB07	7mm	1/2" unf	12.7mm	36mm	15mm	279.0mm	349.0mm
GTTB08US	8mm	5/8" unf	16mm	40mm	19mm	323.5mm	398.5mm
GTTB10	10mm	5/8" unf	16mm	40mm	19mm	323.5mm	398.5mm
GTTB12	12mm	3/4" unf	19mm	55mm	22mm	379.5mm	469.5mm
GTTB14	14mm	7/8" unf	22.2mm	60mm	24mm	442.0mm	547.0mm
GTTB16	16mm	1" unf	25.4mm	70mm	28mm	504.5mm	624.5mm
GTTB19	19mm	1 1/8" unf	28.6mm	80mm	32mm	571.0mm	706.0mm
GTTB22	22mm	1 1/4" unf	32mm	85mm	36mm	631.5mm	781.5mm
GTTB26	26mm	1 3/8" unf	35mm	105mm	38mm	693.5mm	853.5mm

Also available in Closed Body Style