

STAINLESS STEEL MAST TERMINALS

Stemball Terminals - Imperial Wire

Benefits

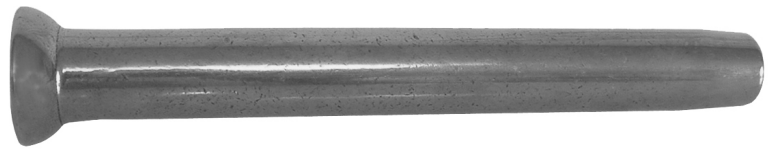
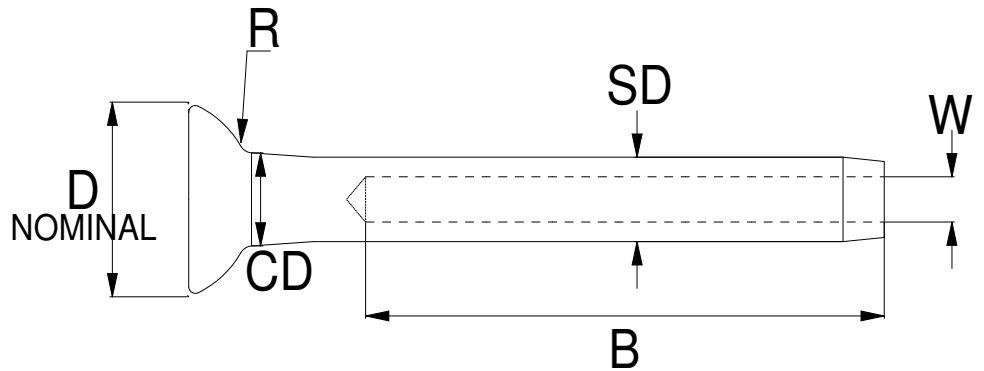
Electrical upsetting with beneficial grain structure and low stress levels to reduce fatigue.

Free from structural welds which may reduce the strength and integrity of the product.

All Stemball Terminals are manufactured from solid bar - no welding involved.

Inspection certificate BS EN 10204 3.1B available on request (This must be specified at the time of order).

High quality finish and excellent polish



Stemball Terminals for Imperial Wire

Product Code	Wire	D	B	W	R	SD	CD
SB1/8-065	1/8" unf	12.5mm	39mm	3.4mm	6.3mm	6.3mm	7.5mm
SB5/32-090	5/32" unf	17.0mm	45mm	4.4mm	8.8mm	7.5mm	8.5mm
SB3/16-090	3/16" unf	17.0mm	52mm	5.4mm	8.8mm	9.1mm	10.0mm
SB3/16-110	3/16" unf	21.0mm	52mm	5.4mm	10.8mm	9.1mm	10.0mm
SB1/4-110	1/4" unf	21.0mm	64mm	6.5mm	10.8mm	12.5mm	13.5mm
SB9/32-110	9/32" unf	21.0mm	70mm	7.5mm	10.8mm	14.3mm	15.0mm
SB9/32-140	9/32" unf	27.0mm	70mm	7.5mm	13.8mm	14.3mm	15.0mm
SB5/16-140	5/16" unf	27.0mm	80mm	8.5mm	13.8mm	16mm	18.5mm
SB3/8-160	3/8" unf	31.0mm	100mm	10.6mm	15.8mm	18mm	19.5mm
SB1/2-180	1/2" unf	35.0mm	132mm	12.8mm	17.8mm	21.4mm	23.0mm

Larger Sizes Available Upon Request

All products are produced to a high degree of quality control, using modern lean manufacturing processes, resulting in a reliable and consistent product